

Face Mask with Non-Woven Lining and Wire Over Nose

Design and materials suggested are a result of input from a Medical Doctor at Cornell Hospital.



Why non-woven fabric inside of the mask is important:

The non-woven fabric has dust filtration properties, is light-weight and breathable

2. Non-woven fabric

- a. If medium-heavy interfacing
Cut 1 – 7½”* x 8½”
or
- b. Light-weight interfacing:
Cut 1 - 7 ½”* x 15”

*if using 20” interfacing substitute 6¾” for 7½”, enabling you to get three linings across the 20” width of the interfacing.

Supplies:

1. 100% cotton fabric

Adult mask:

- cut 1 - 7½” x 15”
- cut 2 – 2 ¼” x 5½” - 6”

Child’s Mask (medium):

- cut 1 – 7” x 14”
- cut 2 – 2 ¼” x 5”

Child’s Mask (small):

- cut 1 - 6½” x 13”
- cut 2 – 2 ¼” x 4½”

3. ⅛” or ¼” wide elastic

Cut 2 – 11” long

Ties alternative: two 33” ties can be sewn in the same way as the elastic, just tack the tie down in the center of the binding)

4. Twist-tie or pipe cleaner – 6”

5. Pleating Template (see page 8)

Mask Construction Video: <https://www.youtube.com/watch?v=UOhikPW4pE>

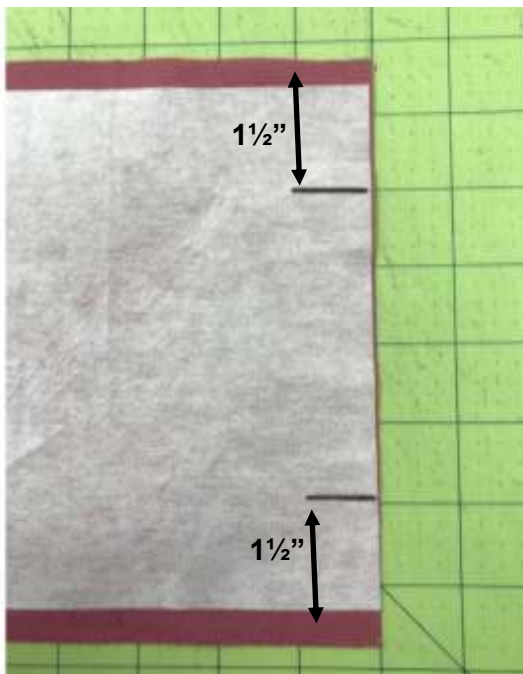
Pleating Video: <https://www.youtube.com/watch?v=0dZz1ZhdRm8&t=34s>

Mask Construction:**1/2" seam allowances**

1. If using fusible interfacing iron to the wrong-side of the mask.
If using regular interfacing pin in place.

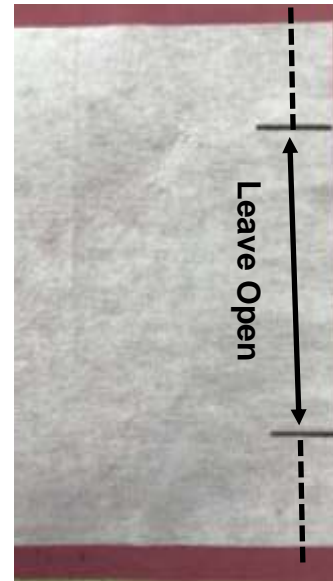


2. Draw a line 1 1/2" from each edge on one 7 1/2" side of the mask.



3. If fabric frays easily serge or zigzag short edges of mask.

4. Fold mask in half with right sides together. Sew from the edge to the lines drawn on both sides.



5. Press the seam open.



6. Turn the mask right-side out and sew down the seam allowance that does not have interfacing on it.

You will be sewing into the inside of the mask so you will need to flatten the mask out as you sew.



7. Fold the mask with the opening 1/2" below the top edge and finger-press. Sew close to the top edge of the mask.



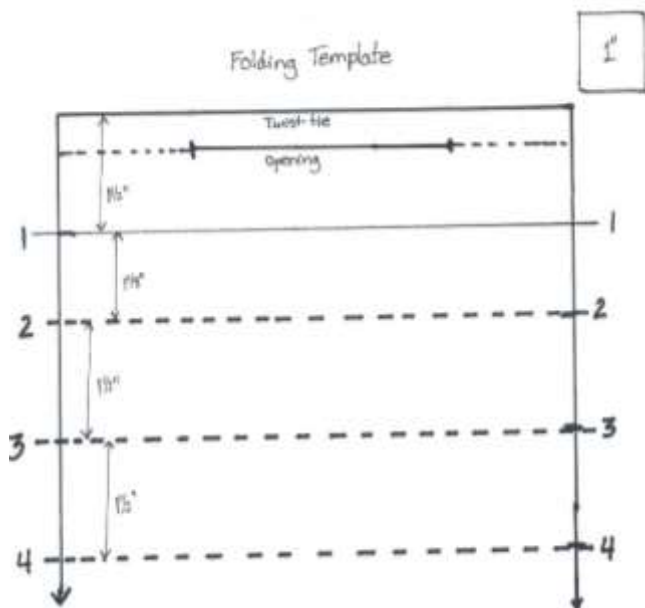
8. Open the mask and slip the twist-tie inside the mask and push it toward the fold at the top of the mask.



9. Sew the edge of the opening closed (twist-tie is in here so be careful not to sew it).



10. Flatten the mask and sew along the bottom edge of the mask.
11. Lay the mask on the pleating template (see page 9) with the twist-tie side at the top.



12. Mark the four lines on each side of the mask using the pleating template as a guide.



13. Create the first fold across the mask by folding at the second mark (#2) on each side.



14. Lay the fold up to mark #1 on each side of the mask. This creates the first pleat. Press.



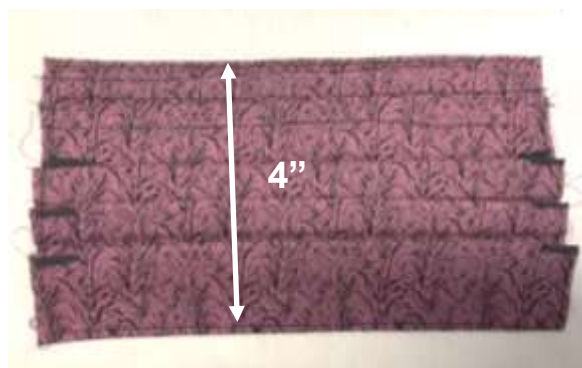
15. Create a second fold across the mask by folding along mark #3 on each side of the mask. Lay the fold line at the bottom of the first pleat and press.



17. Center the pleated mask edge on one of the binding pieces with right sides together.



16. Repeat using mark #4 for the third pleat. Press. The height of the mask should be approx. 4"

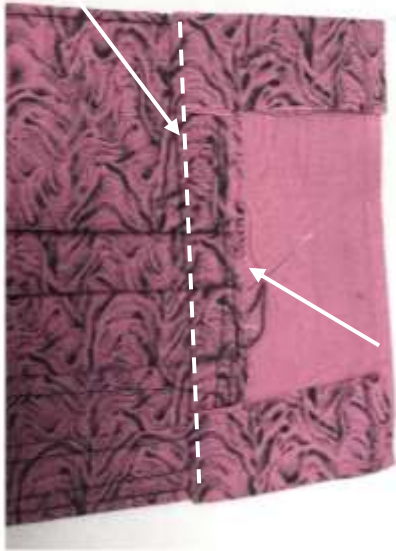


18. Fold the ends of the binding over the mask making the fold even with the edge of the mask. Sew.



19. Press the binding out with the edges folded in.

Stitching Line



21. Bring the fold of the binding over to the stitching line and press.

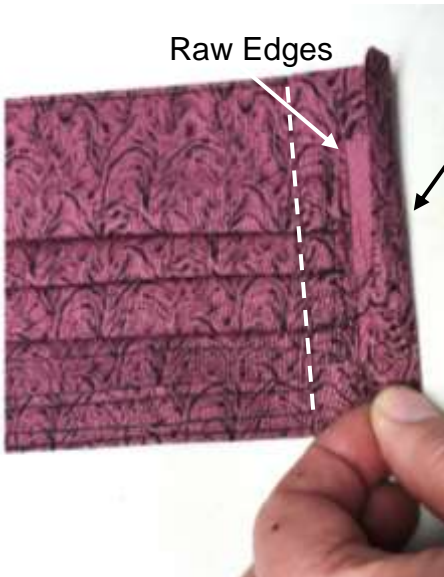
DO NOT PIN YET!!!!



20. Place the long edge of the binding so it meets the raw edge of the mask. This creates a fold.

Raw Edges

Fold



22. Repeat with the other binding piece on the other pleated mask edge.

23. Unfold the binding and lay the elastic inside the binding.



24. Fold the binding back down to the stitching line and sew close to the edge to secure it to the mask. Do not sew into the elastic.



26. Tie the elastic on each side of the mask.

(if making a medium or small, adjust elastic length to desired size)



25. Repeat for the other side of mask.
(Mask should look like photo.)



27. Pull the knot into the inside of the binding.



Congratulations!!!!

You DID IT!!!!

Pleating Template

